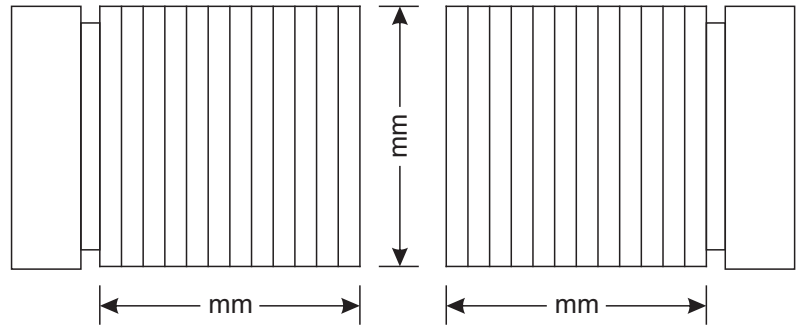


DEA Motorisering

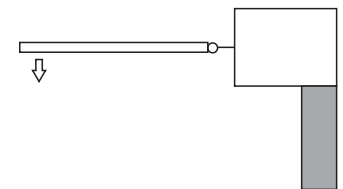
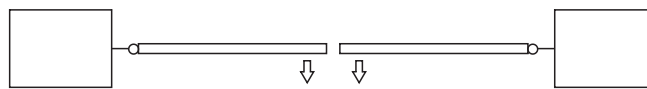
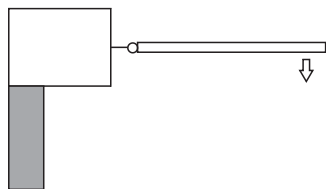
Afmetingen en gebruik van de deur :



| | | | | |
|--------------------------|---------------------|-----------------------|---|------|
| 1 vleugel | 2 vleugels | | | |
| Breedte (per vleugel) : | mm | | | |
| Hoogte (per vleugel) : | mm | | | |
| Gewicht (per vleugel) : | Kg | | | |
| Structuur van de poort : | Vol | Opengewerkt : | % | Open |
| Gebruik : | Privé / Particulier | Publiek / Industrieel | | |

Positie van de linker vleugel :

Positie van de rechter vleugel :



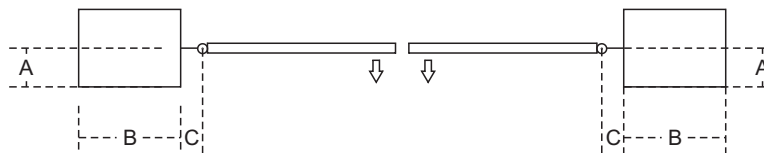
Opening tegen de muur

Vrije opening

Vrije opening

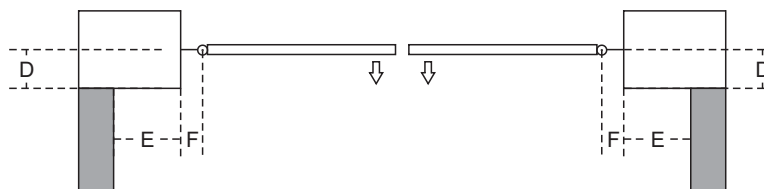
Opening tegen de muur

A = mm
B = mm
C = mm



A = mm
B = mm
C = mm

D = mm
E = mm
F = mm



D = mm
E = mm
F = mm

Mecanische aanslag ?

| | Linker vleugel | | Rechter vleugel | |
|----------|----------------|-----|-----------------|-----|
| Opening | Ja | Nee | Ja | Nee |
| Sluiting | Ja | Nee | Ja | Nee |

Openingshoek : (standaard = 90°)

Openingshoek : (standaard = 90°)

Bedieningstype :

| | |
|------------------|----|
| Zender | St |
| Keypad | St |
| Sleutel selector | St |